

SPACE.®

A COMMERCIAL COMPLEX



[FOR EVERYONE]

BY  GATES
DEVELOPMENTS

ABOUT THE DEVELOPER

DRIVEN BY AMBITION.





A DEVELOPMENT
COMPANY DRIVEN BY AMBITION

WHO WE ARE

A DEVELOPMENT DRIVEN BY AMBITION

A full-service real estate development and management company that takes pride in redefining the traditional real estate model to create positive experiences for its community. We strive for real mutual success, by encouraging people to live their lives ambitiously in developments that are progressive, sustainable, and future-forward. Ever since its birth in 2018, the company has proven to be a dynamic player with high-level expertise of over 25 years, persistently transcending property trends and delivering on its promise.



OUR VISION

HUMAN-CENTRIC AND PROGRESSIVE

A full service real estate development and management company, that leads with a progressive human-centric and ambitious mindset through all its business endeavors.



OUR MISSION

DELIVERING THE DREAM OF EVERY HOMEOWNER

Choice and industry leader known for its human-centric approach by delivering the dream of homeowners at every touchpoint



OUR VALUES

NAVIGATING ALL BUSINESS ENDEAVOURS
WITH VALUES

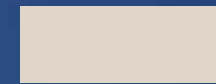
THOSE VALUES GUIDE OUR BUSINESS DECISIONS AND BUILD
A UNIFIED PHILOSOPHY AND GUIDE OUR BUSINESS DECISIONS

AGILITY



WE EXECUTE WITH SHARP RIGOR
AND FLEXIBILITY

GRIT



REGARDLESS OF THE CHALLENGES WE MAY FACE
IN THE REAL ESTATE MARKET WE RESLIANTLY FIND
SOLUTIONS FOR THE MARKET

EXPERTISE



A DISTINGUISHED IN-DEPTH KNOWLEDGE OF THE
MARKET AND ITS TECHNICALITIES.

AMBITION

AMBITION FOR THE SUCCESS OF EVERY ASPECT OF
BUSINESS; INNOVATING, THINKING BEYOND THE
CONVENTIONAL AND STRIVING TO EXCEL.



**FOCUSING ON DRIVING OUR DIGITAL
TRANSFORMATION**

A FUTURE READY COMPANY

**LEARNING FROM DIGITAL NATIVES WITH A
TRANSFORMATIVE DRIVE**

Our company is future-ready. This is because digital natives are changing the world and they are doing it remarkably. It is important for us to learn from them and we integrate them as part of our team. Gates has been focusing on driving digital transformation with a team of young, dynamic, innovative and creative young professionals. Backed by experienced professionals, Gates is firmly positioned as a future ready organisation.

WHAT SETS US APART

A DEVELOPMENTS DRIVEN BY AMBITION

We have a defining culture that respects the pillars on which prosperous human connections stand. We build with humans in mind, establish bonds with integrity and utilize our expertise to deliver powerfully. We want to win people over with genuine intentions and products that consider their lifestyles and needs.



SPEAKING TO DIFFERENT



AUDIENCES



OUR DEVELOPMENTS

All of our developments stand out with their fresh designs, sustainable and eco friendly architectural compositions, and human-centric philosophies.

MEET OUR NEW PROJECT



SPACE.[®]
COMMERCIAL COMPLEX

SPACE[®]

**COMMERCIAL COMPLEX IS A
LANDMARK FOR THE FUTURE.**

SPACE

SPACE

SPACE

SPACE

PROJECT DESIGNED BY



AWARD WINNING DESIGNER

RAEF FAHMI

THE NEW

**SPACE WILL BE THE HOME TO THRIVING
SUCCESS STORIES**

The new landmark of West Cairo is a prime destination that boasts strategic offices and commercial outlets with cutting edge facilities

SPACE.

LANDMARK.



A LANDMARK FOR THE FUTURE

A LANDMARK FOR THE FUTURE

A LANDMARK FOR THE FUTURE

A LANDMARK FOR THE FUTURE

A LANDMARK FOR THE FUTURE

A LANDMARK FOR THE FUTURE

A LANDMARK FOR THE FUTURE

A LANDMARK FOR THE FUTURE

A LANDMARK FOR THE FUTURE

A LANDMARK FOR THE FUTURE

A LANDMARK FOR THE FUTURE

A LANDMARK FOR THE FUTURE

WELCOME TO

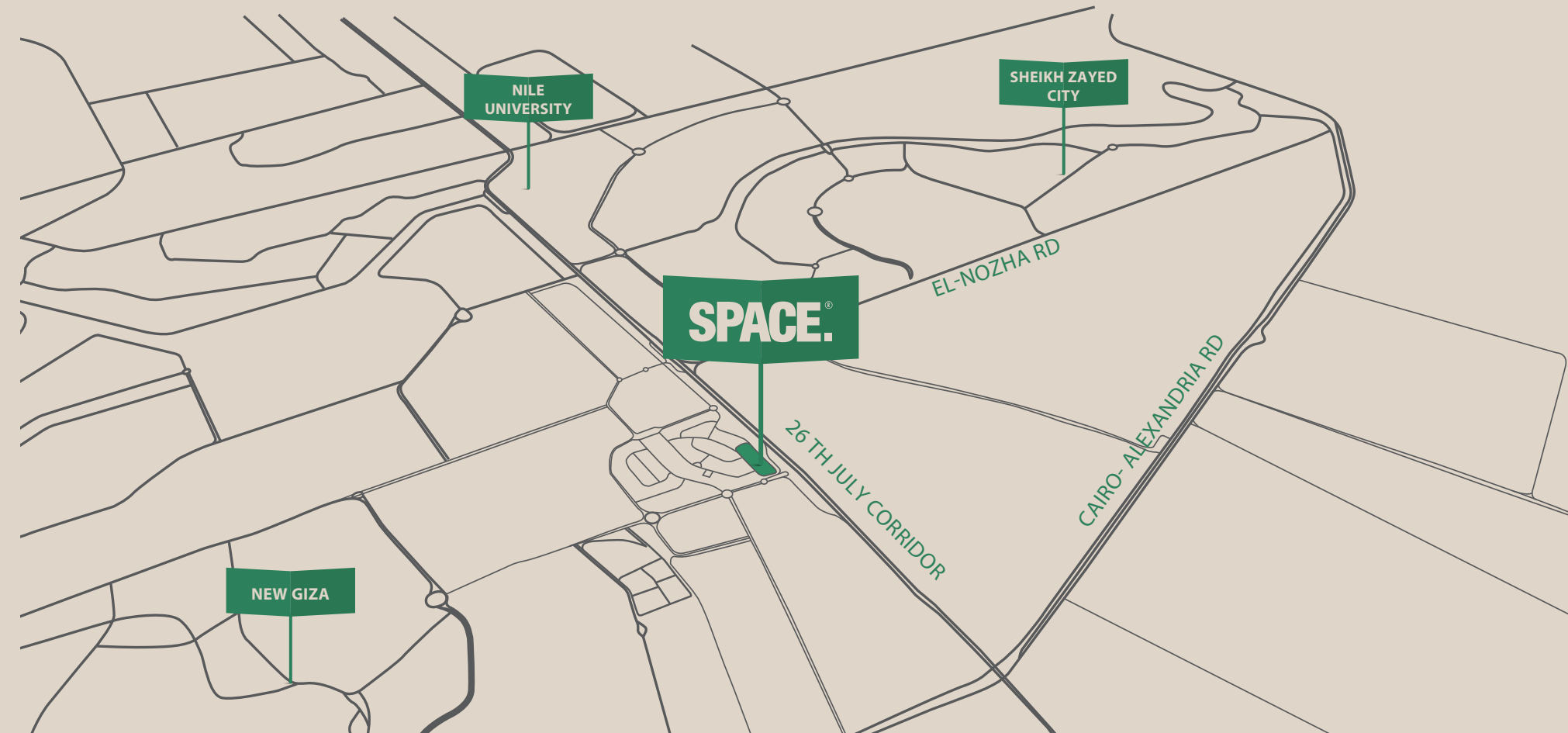
A WORLD CLASS.

COMMERCIAL COMPLEX WHERE SUCCESS IS INEVITABLE

UNIQUE LOCATION.

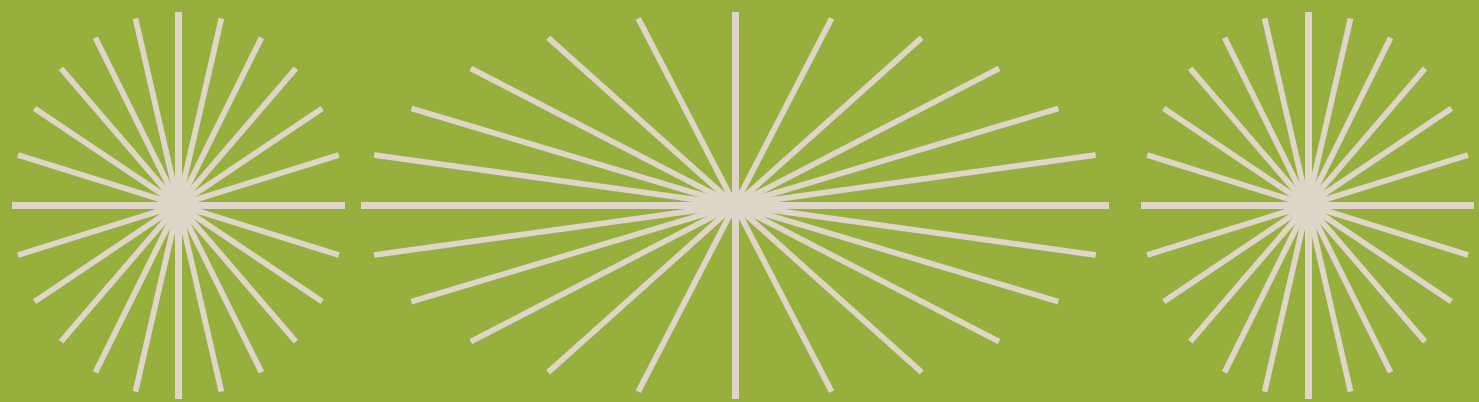
Its prime address is directly on the 26th July Road, with direct access to the Mehwer Road. SPACE is located only five minutes away from the New Giza and Palm Hills Residential Projects, five

minutes away from Zayed district and Mohandeseen and Doki Providing a few minutes' drive to key districts, Space commercial complex is an ideal location to start writing your success story.



Project Specs:

| | | | |
|------------------|-------------------|--------------------|-------------|
| PLOT | COMMERCIAL | MAX FPA 30% | 10694.7 SQM |
| LAND AREA | 35,649 SQM | MAX HEIGHT | G+3 |
| MAX BUA | 42,779 SQM | BASEMENT | 1 BASEMENT |



THOUGHTFULLY DESIGNED TO
SET NEW BENCHMARKS



Space is thoughtfully designed to set new benchmarks in functionality and comfort. The key business district thrives with a variety of modern office buildings and single office Outlets, which come with progressive facilities and opportunities. By capitalizing on efficiency and convenience, the prime hub brings business leaders and professionals closer to all facets of community life.

From world class retail, educational and medical facilities, to the finest hospitality, recreational and sports experiences, everything you need is just a few steps away from your office. With your most basic and luxurious amenities located within close proximity, inspires a unique mix that has your interest at heart.

RETAIL LUXURY



Space commercial complex will host a world class retail that boasts a variety of shopping and dining options. Just a few steps away from your work place, The retail level meets every need of yours; from your basic to your most luxurious desire.



CHOOSE YOUR OFFICE SPACE

Space commercial complex is the ideal location to start and grow your business. The district provides a committed design team to create the perfect office environment for you. A range of personalized options offer modular styles and layouts, which are made to perfectly suit your professional

needs and future business activities. As new developments arise, the business district enables companies to expand their reach and stretch out with long term strategic goals.



HEALTH

DISTINGUISHED HEALTHCARE AT MEDICAL PARK

Space commercial complex distinguished Healthcare at Medical Park
Space brings its community closer to the most prominent healthcare facility in West of Cairo

Located within the business district, top tier clinics and labs offer a wide range of medical services
that are immediately accessible all year long.

CARE



PROVIDING YOU WITH

TOP TIER AND PREMIUM
HEALTH CARE FACILITIES

DAILY NEEDS

OPTIMIZING YOUR WORK EXPERIENCE

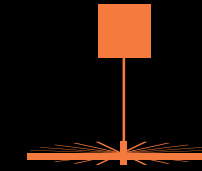


A full community life flourishes at Space Commercial Complex where your everyday needs and luxuries are in close proximity to your work place. To optimize your work experience, SPACE brings you closer to your daily necessities. Offering

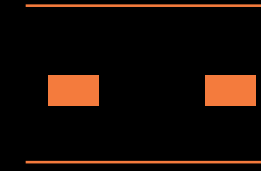
various banking facilities, courier services and a world class beauty salon, SPACE COMMERCIAL COMPLEX provides convenience for professionals and efficiency for businesses

PROVIDING YOU WITH

EVERYDAY NECESSITIES



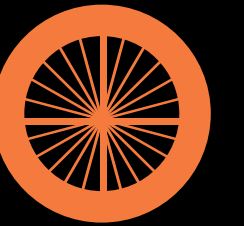
PREMIUM
LOCATION



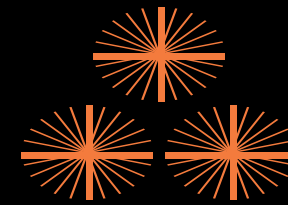
PEDESRTIAN
PROMENADE



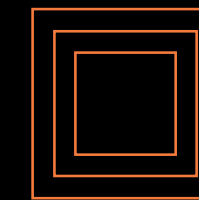
UNDERGROUND
PARKING



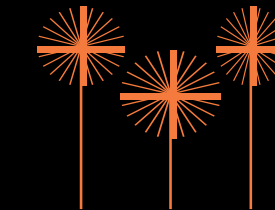
VEHICULAR
DROP-OFF



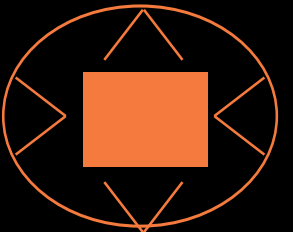
WATER
FEATURES



MULTIPLE
ENTRANCES



OPEN
LANDSCAPE



MULTIPLE
PLAZAS

THE PROJECT COMES TOGETHER WITH OUR
DEVELOPMENT FOR

OUR MASTER PLAN

FEATURING DESIGNS TAILORED TO MEET THE
PROJECT'S CORE VALUES

SPACE.[®]

MAIN STREET



NEIGHBOUR

COMMERCIAL COMPLEX WHERE SUCCESS
IS INEVITABLE

SPACE ACCESSIBILITY

EASILY ACCESSIBLE UNDER ANY
TRAFFIC CONDITIONS.



HOW IS THE CIRCULATION IN SPACE.®



BUILDING TYPES



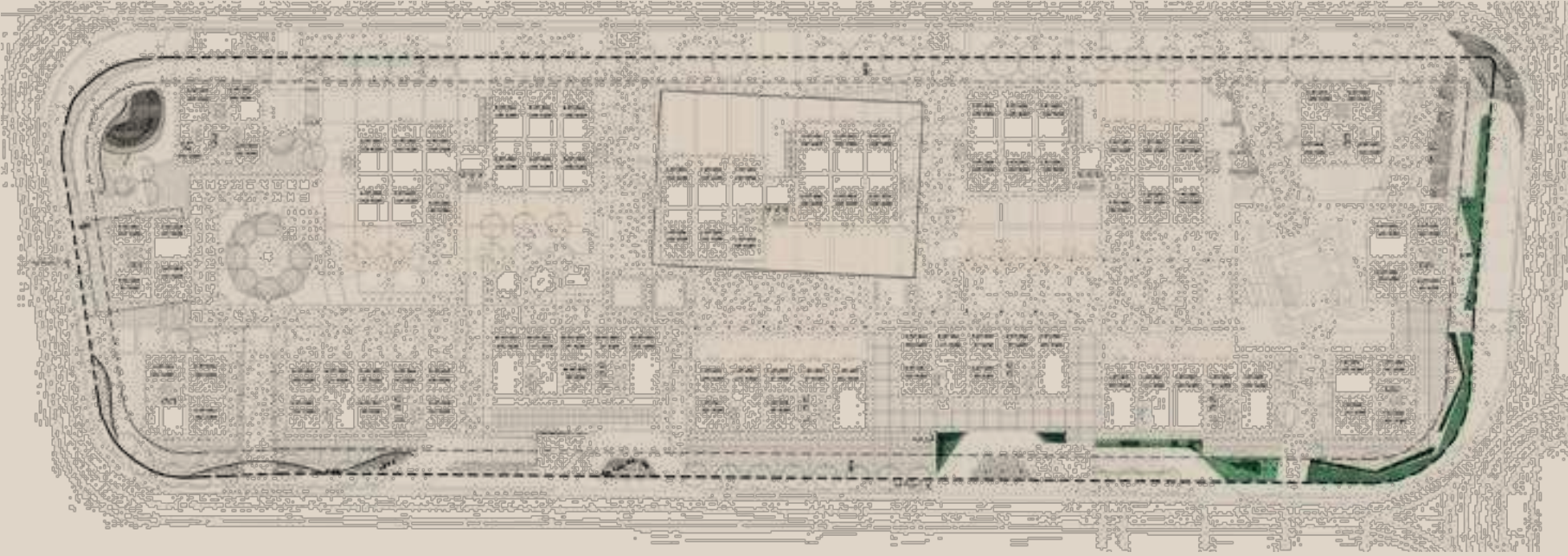
ADMIN AND MEDICAL UNITS





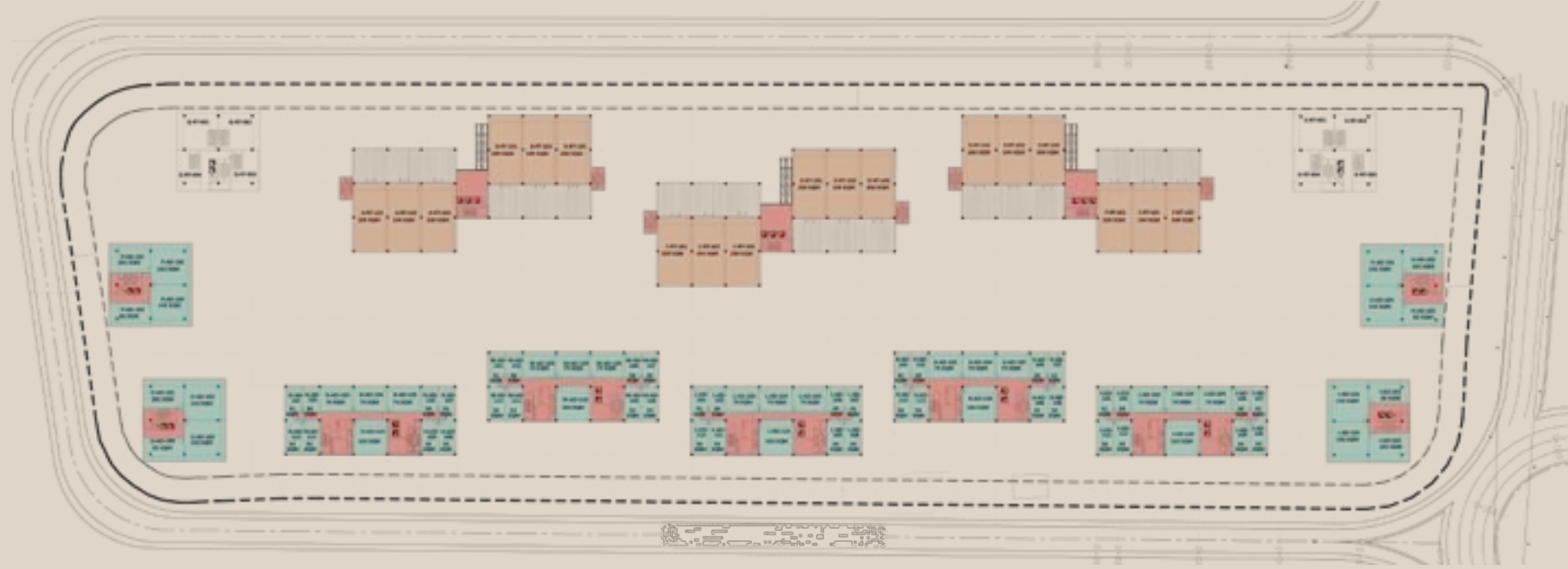
GROUND FLOOR

00



FIRST FLOOR

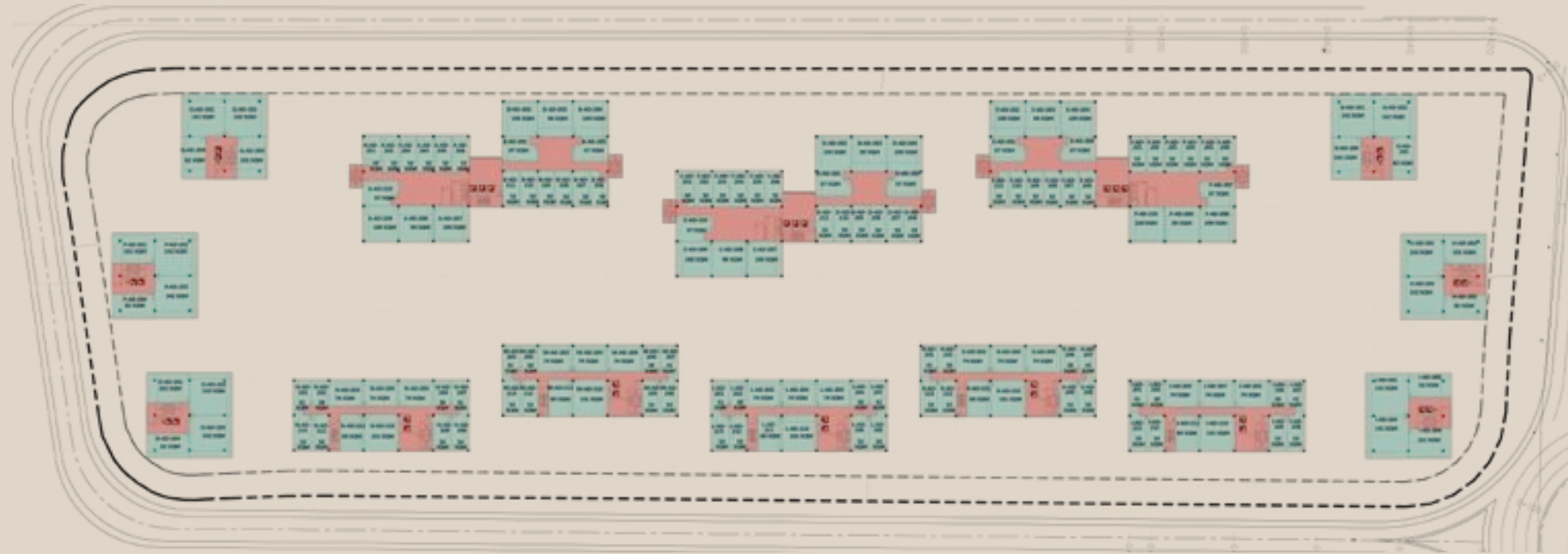
01





SECOND FLOOR

02



THIRD FLOOR

03



OUR TENANTS



SPACE.®

A COMMERCIAL COMPLEX



BY  **GATES**
DEVELOPMENTS